

DRIVEWAYS AND FOOTPATHS

It is illegal to park in or across any driveways. It is also illegal to block a footpath.

PARKING NEAR INTERSECTIONS

It is illegal to park less than 10m from an intersection as this blocks vision for turning drivers and creates a hazard for all motorists.

PEDESTRIAN CROSSINGS AND CHILDREN'S CROSSINGS

- Slow down as you approach pedestrian crossings and children's crossings.
- Do not proceed if the road beyond the crossing is blocked.
- Do not stop or park in the No Stopping zones on either side of the crossing as this blocks vision.
- At a children's crossing you must stop at or before the stop line, if there is a pedestrian about to cross or already on the crossing.
- Do not proceed through a children's crossing until all pedestrians have completely cleared the crossing.

Fine exceeds \$405 + 2 demerit points

SOLID YELLOW KERB LINES

An unbroken yellow kerb line is a No Stopping line and therefore the same rules apply as for a No Stopping sign. You must not stop for any reason other than a medical or similar emergency.

Fine exceeds \$236 + 2 demerit points

USING MOBILE PHONES

It is **illegal** to make or receive a call on your mobile phone while you are driving unless your phone is secured in a fixed mounting or does not require you to touch or manipulate the phone in any way.

The only time you can use the other features of a mobile phone such as texting or emailing is when your car is **legally parked** and the **ignition is switched off**.

Do not use your mobile phone especially while driving in a school zone

Fine exceeds \$405 + 4 demerit points

CONTACT DETAILS

A Road Safety initiative of
Ku-ring-gai 9424 0000, Lane Cove Council 9911 3555,
Mosman 9978 4000, North Sydney 9936 8100 and
Willoughby Councils 9777 1000



Mosman
COUNCIL



These fines and demerit points only apply in school zones and are current at time of printing July 2013. Different penalties apply in other locations.

2013
Great to keep in your car

Park Safe & Stay Safe around schools



NO STOPPING SIGNS



No Stopping signs mean **you must not stop here at any time**. If times of operation are shown on the sign then the restriction only applies at that time.

Fine exceeds \$304 + 2 demerit points

DROP-OFF & PICK-UP ZONES



There are many signs within school zones which indicate whether or not you may stop to drop off or pick up your children.

These signs have limits on the amount of time you can stop or park.

The time limits apply from the moment you arrive, whether you remain in your vehicle or not.

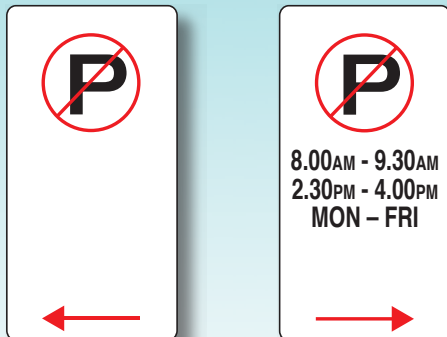
TIME RESTRICTED PARKING



Parking signs with specified time limits allow drivers to park their vehicle for a maximum period of time, eg 5 minutes, 1 hour.

Fine exceeds \$101

NO PARKING SIGNS

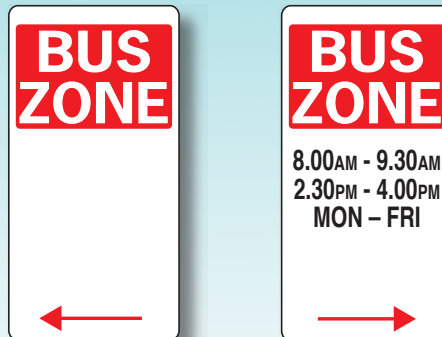


You can stop in a No Parking zone for a maximum of **2 minutes** while picking up or setting down passengers or goods. You must stay within **3 metres** of your vehicle at all times.

Hours of operation often apply to No Parking signs. This means that restrictions apply for these times only.

Fine exceeds \$169 + 2 demerit points

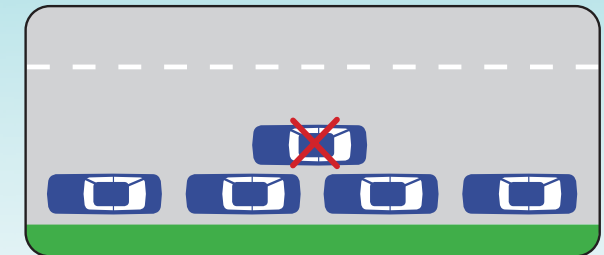
BUS ZONE SIGNS



You must **not stop within a bus zone at any time**. If times of operation are shown on the sign, the restriction applies only at those times.

Fine exceeds \$304 + 2 demerit points

DOUBLE PARKING



Double parking at any time is **illegal** and is particularly dangerous around schools. It reduces visibility and blocks the road for other motorists. Children stepping onto the road to get into or out of a double parked vehicle are not visible to other motorists.

Fine exceeds \$304 + 2 demerit points

Keep our kids safe!

Park legally in school zones

No Parking

Drivers may stop in this zone to **drop off** or **pick up** children, but note:

- Maximum stop time is 2 minutes
- Driver must remain in or **within 3 metres** of the vehicle
- Vehicle must **not** be left unattended



No Stopping

- Stopping is **not** permitted at any time



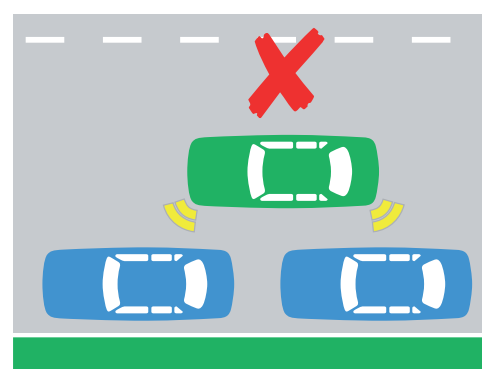
Bus Zone

- Stopping is **not** permitted during the times shown on the sign



Double Parking

- Drivers are **not** permitted to stop or park between the centre of the road and another vehicle that is parked at the side of the road.



If times of operation are shown on the sign, the restriction only applies during the times shown.

The stated fines and demerit points apply in school zones and are current as at 1 July 2013.

PARK LEGALLY IN SCHOOL ZONES AND KEEP OUR KIDS SAFE!

NO STOPPING



Stopping is **not** permitted at any time.

BUS ZONE



Stopping is **not** permitted during the times shown on the sign.

NO PARKING



Drivers may stop in this zone to **drop off** or **pick up** children, but note:

- Maximum stop time is **2 minutes**
- Driver must remain in or **within 3 metres** of the vehicle
- Vehicle must **not** be left unattended

A road safety initiative of



HEAVY FINES AND LOSS OF DEMERIT POINTS APPLY